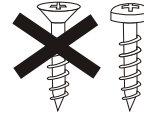


МОНТАЖ  
FITTING  
MONTAGE



# Vertikal Standart/Slope

Bitte nur beiliegende Schrauben verwenden.  
Please use enclosed screws only.  
Se servir exclusivement des vis jointes.  
Просьба использовать только  
приложенные винты.



Wichtig! Bitte aufbewahren.

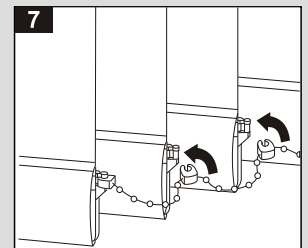
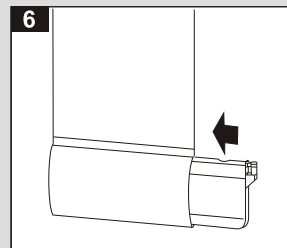
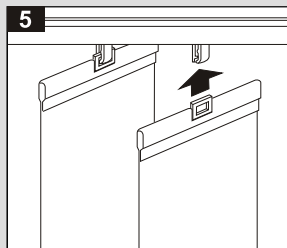
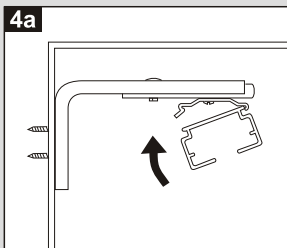
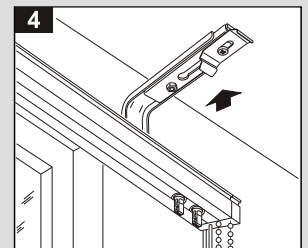
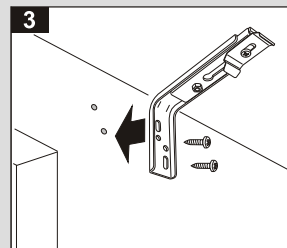
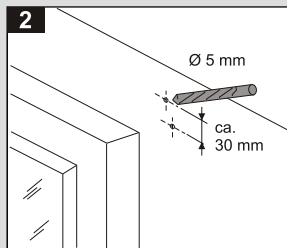
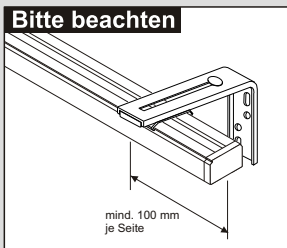
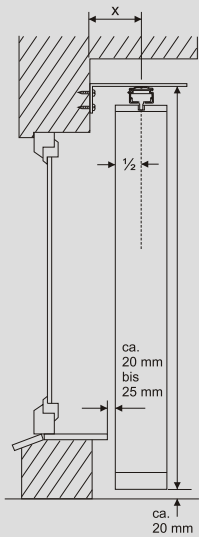
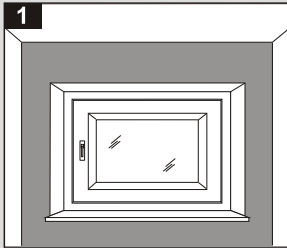
Important! Please keep together.

Important! Veuillez conserver.

Важное указание!  
Просьба хранить!

Montage • Fitting • Montage • Монтаж

## Wand

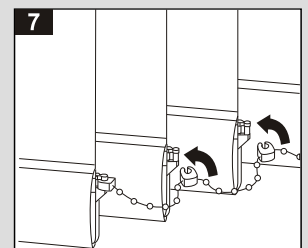
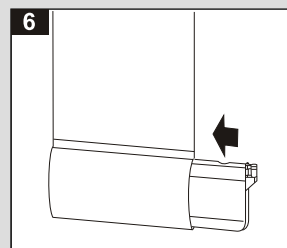
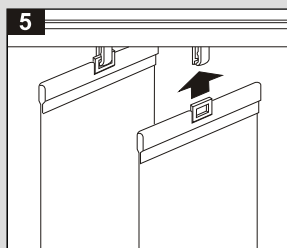
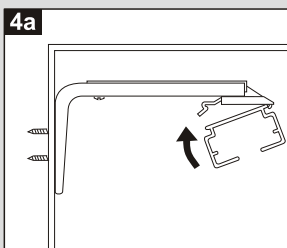
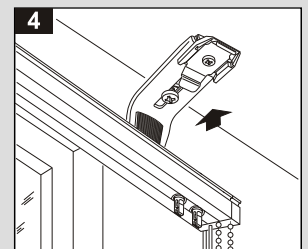
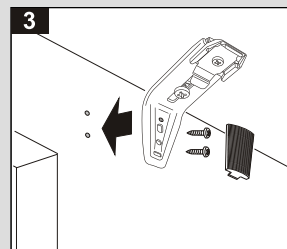
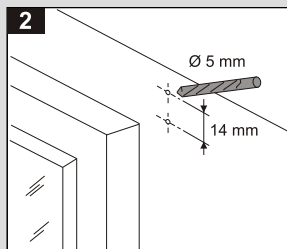
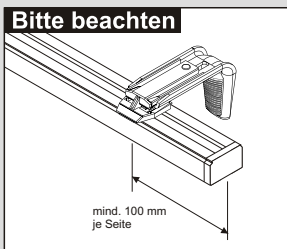


### 127er Lamelle

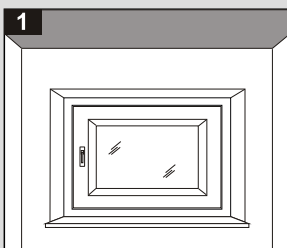
X = Fensterbanküberstand  
+ 20 mm + 63,5 mm

### 89er Lamelle

X = Fensterbanküberstand  
+ 25 mm + 44,5 mm



## Decke





# Vertikal Standart/Slope

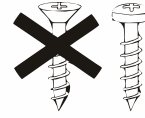
Wichtig! Bitte aufbewahren.

Important! Please keep together.

Important! Veuillez conserver.

Важное указание!  
Просьба хранить!

Bitte nur beiliegende Schrauben verwenden.  
Please use enclosed screws only.  
Se servir exclusivement des vis jointes.  
Просьба использовать только  
приложенные винты.



**Bitte beachten**

**2**

**3**

**4**

**4a**

**5**

**6**

**7**

**127er Lamelle**  
X = Fensterbanküberstand + 20 mm + 63,5 mm

**89er Lamelle**  
X = Fensterbanküberstand + 25 mm + 44,5 mm

## Demontage • Disassembly • Démontage • Демонтаж

## Reinigung Fenster

